

HOME OF THE MONTH



MLS: 1070819



FOXBORO AMBERLY - NSL

- 2,224 SQ. FT.
- 3 BEDROOMS
- 2 BATHROOMS
- 3 CAR GARAGE
- LAMINATE/TILE FLOORING
- FIREPLACE
- 2ND OVEN
- GRANITE KITCH/BATH

Community Information

- Pools
- Club House
- Fitness Center
- Splash Park
- Nearby Schools
- Legacy Parkway Trails
- Easy Freeway Access

\$270,900



Style by Design



MLS: 1065480

Foxboro - NSL

- 3 Bedroom
- 2 Bathroom
- 1,501 Sq. Ft.
- Granite Kitch
- Tile Flooring
- Vaulted Ceil

\$204,727



MLS: 1066784

Foxboro - NSL

- 4 Bedroom
- 2 Bathroom
- 1,815 Sq. Ft.
- Vaulted Ceil
- Covered Patio
- Granite Kitch

\$223,500

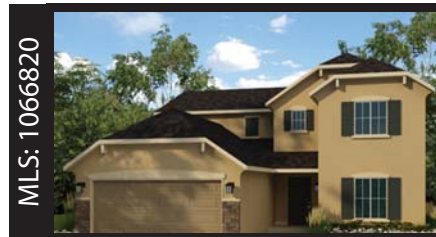


MLS: 1066820

Foxboro - NSL

- 4 Bedroom
- 3 Bathroom
- 2,502 Sq. Ft.
- Bonus Room
- Granite Kitch

\$248,648



MLS: 1066820

Foxboro - NSL

- 4 Bedroom
- 2.5 Bathroom
- 2,757 Sq. Ft.
- Bonus Room
- Granite Kitch
- 3-Car Garage

\$263,485

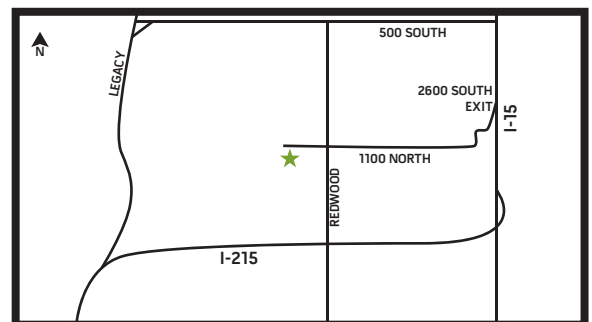


MLS: 1062073

Foxboro - NSL

- 5 Bedroom
- 2.5 Bathroom
- 2,359 Sq. Ft.
- Fireplace
- Granite Kitch
- Granite Bath

\$275,900



Maple Grove
5544 South 2500 West
Roy, Utah
P (801) 985-2300
C (801) 668-5010
From the \$140's

Wildwood Estates
4311 West 5850 South
Hooper, Utah
P (801) 774-6442
C (801) 668-5010
From the \$190's

Sunset Equestrian Estates
1242 South Sunset Drive
Kaysville, Utah
P (801) 593-0600
C (801) 668-5010
From the \$260's

Foxboro Cambria
1081 North Amberly Drive
North Salt Lake, Utah
P (801) 295-7100
C (801) 864-0787
From the \$180's

Foxboro Amberly
1081 North Amberly Drive
North Salt Lake, Utah
P (801) 295-7100
C (801) 864-0787
From the \$210's



Seller reserves the right to change floor plans, maps, prices, and specifications without notice. Prices are subject to change without notice. The model information listed, including availability, floor plans, elevations, features and other information are subject to change. Model home interior decorating, landscaping, fencing and other amenities are for display purposes only. All renderings, floor plans, and maps are artist conceptions and are not intended to be an actual depiction of the buildings, fencing, driveways, or landscaping. Optional features may be included at additional cost and are subject to construction cut-off dates. All square foot measurements, elevations, features, and floor plans are approximate. This advertisement is for illustration purposes only and not a part of a legal contract. Please see a Sales Representative for full details.